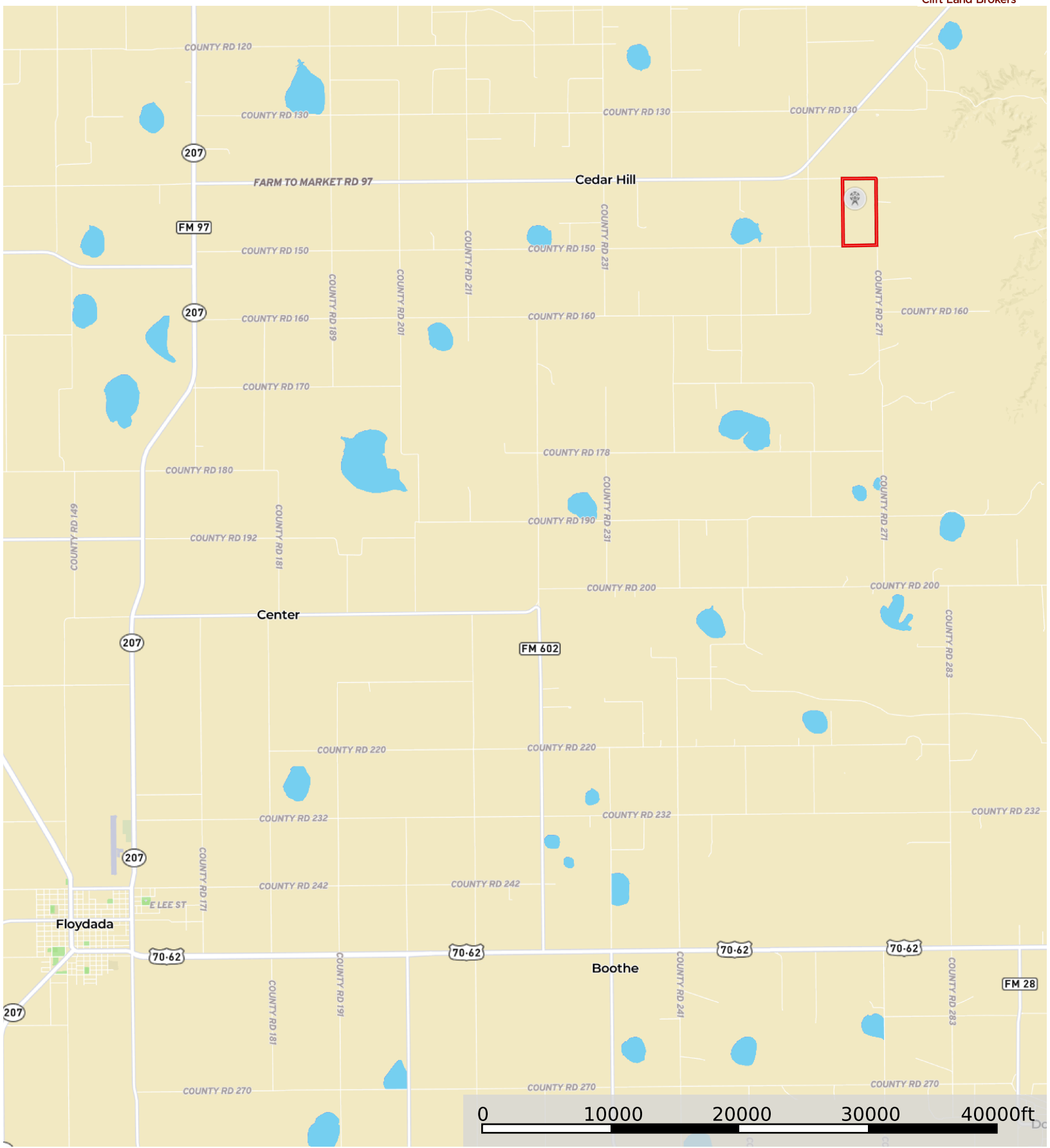




 Windmill  Boundary



 Windmill  Boundary



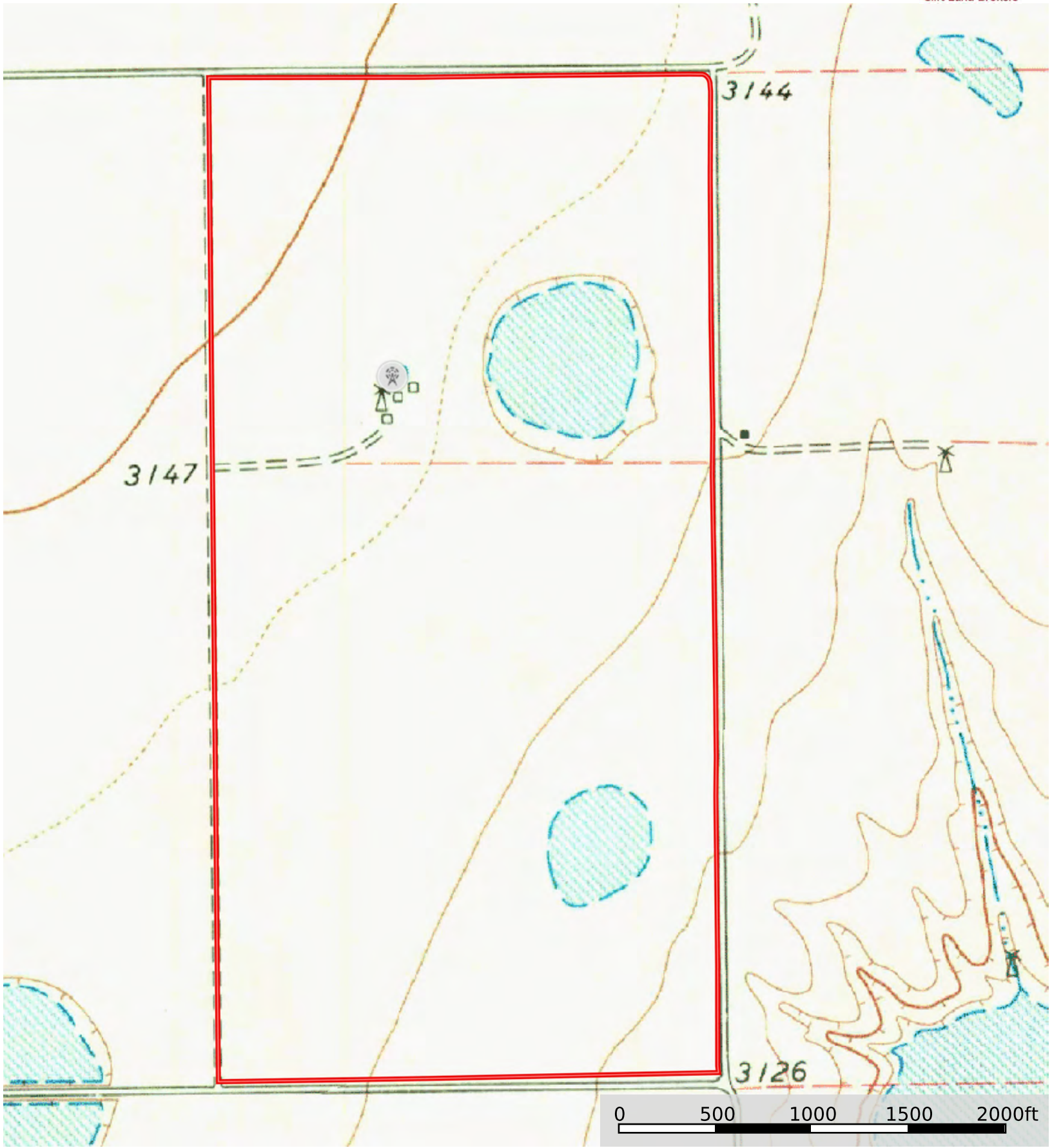
 Windmill  Boundary


Boundary 309.04 ac

SOIL CODE	SOIL DESCRIPTION	ACRES	%	CPI	NCCPI	CAP
PuA	Pullman clay loam, 0 to 1 percent slopes	288.29	93.29	0	46	3e
McA	McLean clay, 0 to 1 percent slopes, occasionally ponded	13.26	4.29	0	35	4w
RaA	Randall clay, 0 to 1 percent slopes, frequently ponded	5.64	1.83	0	12	6w
OcB	Olton clay loam, 1 to 3 percent slopes	1.85	0.6	0	47	3e
TOTALS		309.04(*)	100%	-	44.91	3.1

(*) Total acres may differ in the second decimal compared to the sum of each acreage soil. This is due to a round error because we only show the acres of each soil with two decimal.





 Windmill  Boundary