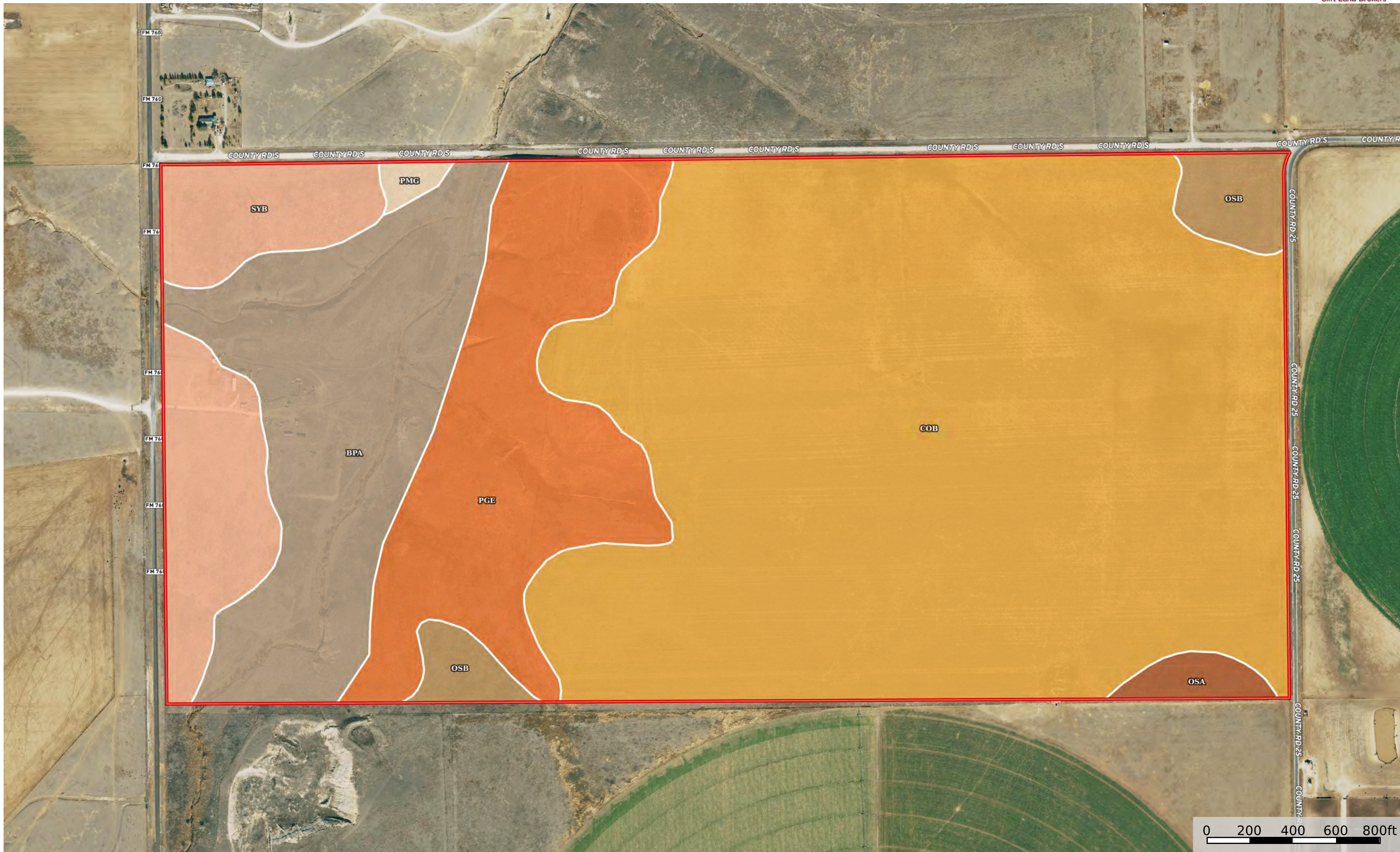
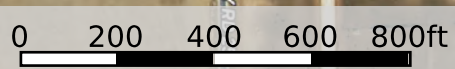
 Boundary

0 200 400 600 800ft



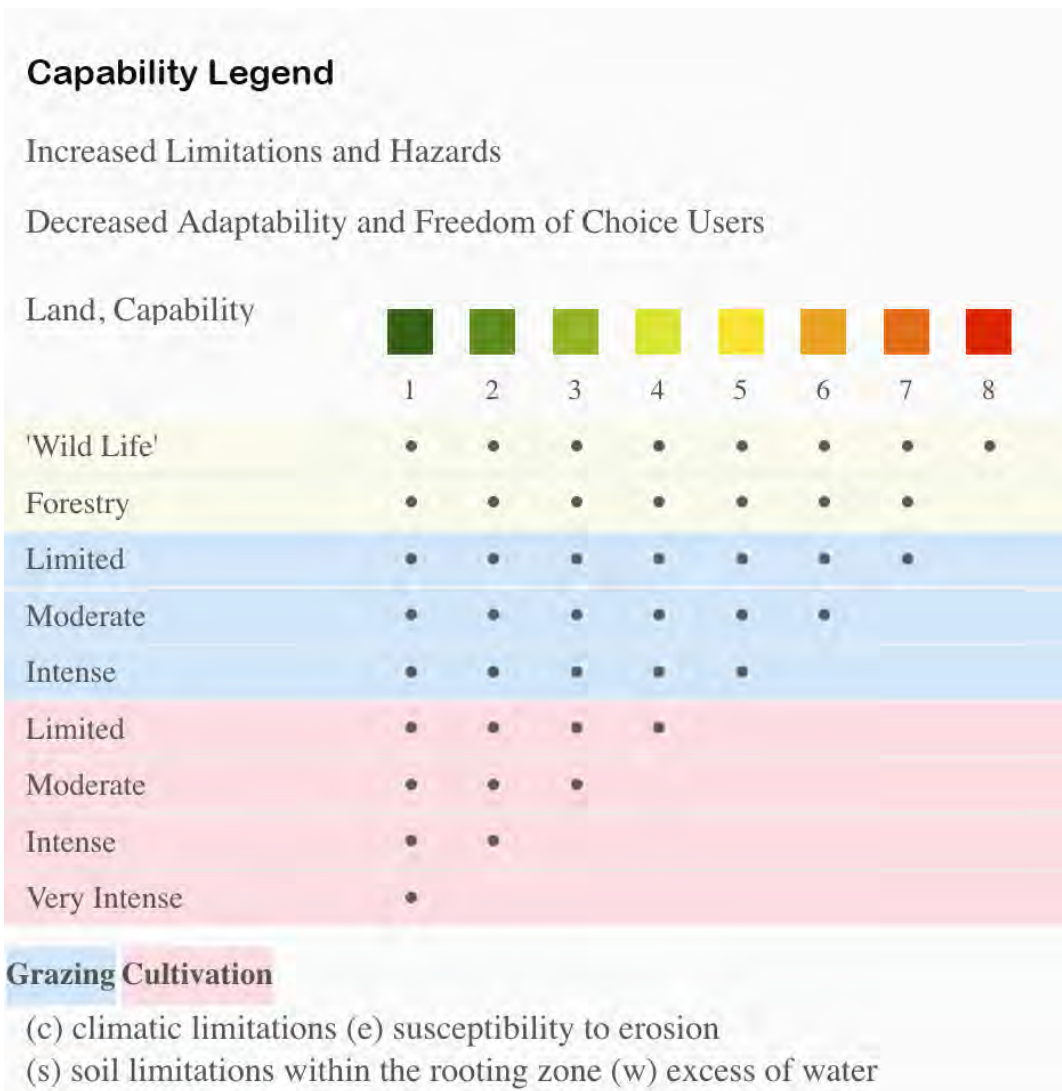
 Boundary

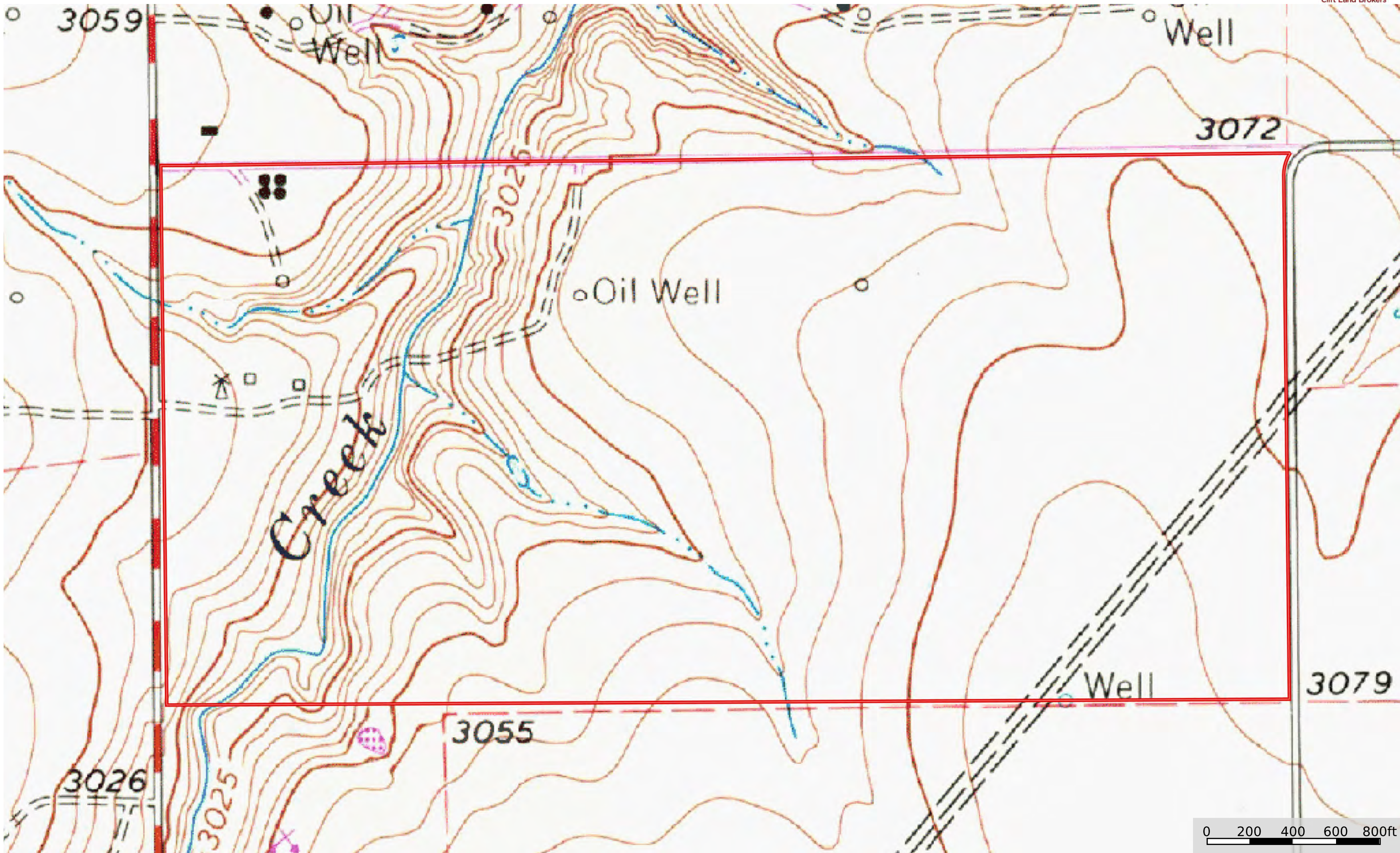



|  Boundary 307.58 ac

SOIL CODE	SOIL DESCRIPTION	ACRES	%	CPI	NCCPI	CAP
CoB	Conlen clay loam, 1 to 3 percent slopes	180.87	58.8	0	30	4e
BpA	Bippus clay loam, 0 to 1 percent slopes, frequently flooded, cool	45.23	14.7	0	52	5w
PGE	Potter soils, 3 to 20 percent slopes, cool	43.61	14.18	0	21	7e
SyB	Sunray loam, 1 to 3 percent slopes	25.7	8.36	0	51	3e
OsB	Oslo silty clay loam, 1 to 3 percent slopes	8.13	2.64	0	56	3e
OsA	Oslo silty clay loam, 0 to 1 percent slopes	2.82	0.92	0	56	2s
PMG	Potter-Mobeetie association, 8 to 45 percent slopes, cool	1.22	0.4	0	5	7e
TOTALS		307.58(*)	100%	-	34.54	4.46

(*) Total acres may differ in the second decimal compared to the sum of each acreage soil. This is due to a round error because we only show the acres of each soil with two decimal.





 Boundary

